

COMPLETE EXTERIOR BOREAS LOCK

ASSEMBLY INSTRUCTIONS

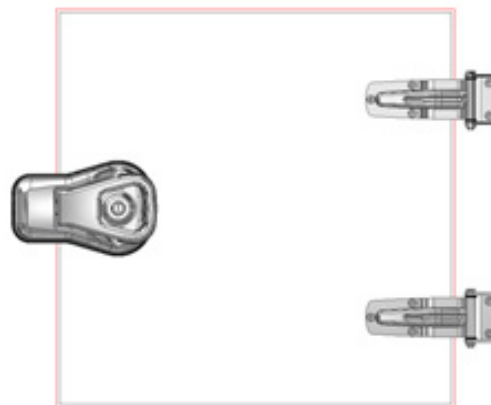
V01 03.11.2020



COMPLETE EXTERIOR BOREAS LOCK

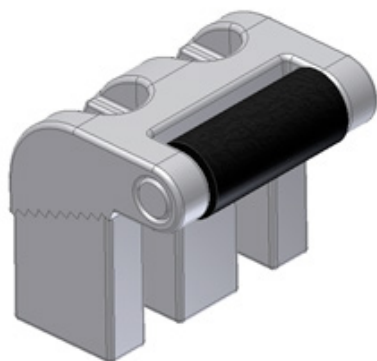
REF. 485000200

The Boreas lock is anchored to the door by four countersunk screws DIN 7991 M8, one of these may be substituted by a safety screw which will prevent the lock from being disassembled.



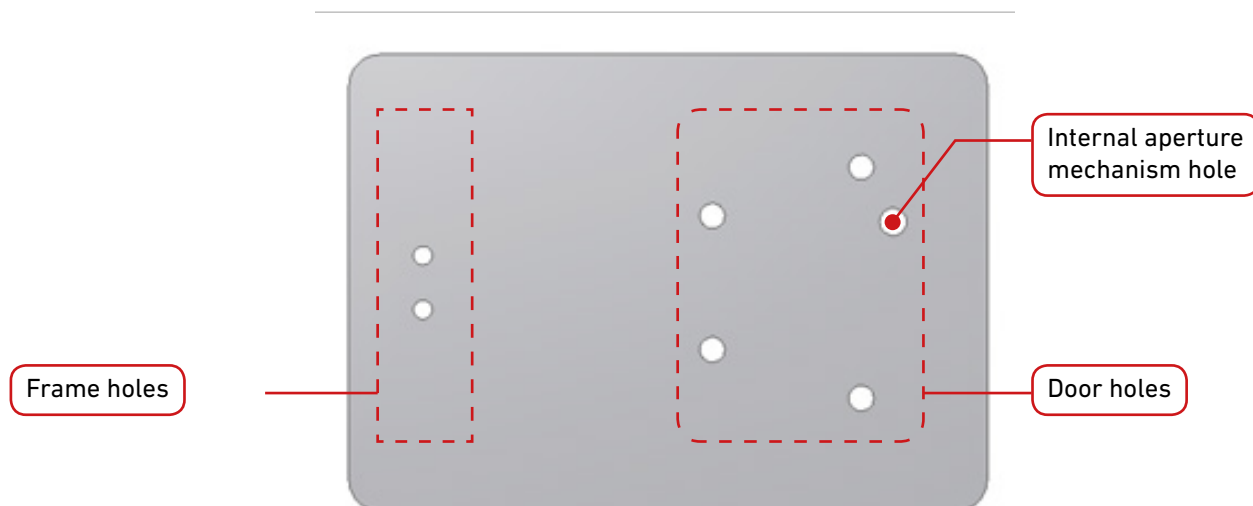
Screw DIN 7991 M8 (x4 UD)

The anchoring piece is screwed to the frame of the door by using cylindrical screws DIN 912 M6. The piece is made of two parts to allow for height adjustment.



COMPLETE EXTERIOR BOREAS LOCK

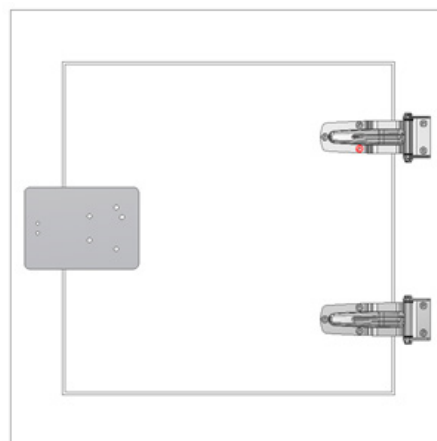
To correctly drill the holes for the door and frame, the template ref. **370020001** needs to be used. The template will ensure correct functioning of the lock.



Position the template as shown in the picture.

The template holes have a diameter of 5mm and function only as a marking tool. The actual holes for the door and frame will be made for screw sizes M8 and M6 respectively.

The internal aperture shown in the above picture will only be considered if such system is installed.



To adjust the anchoring piece, we need first to screw the two parts at their lowest position. If necessary, the next step is to elevate the upper vertical piece. This is done by moving the inferior piece to the left as shown in the picture and until the door is correctly adjusted.

