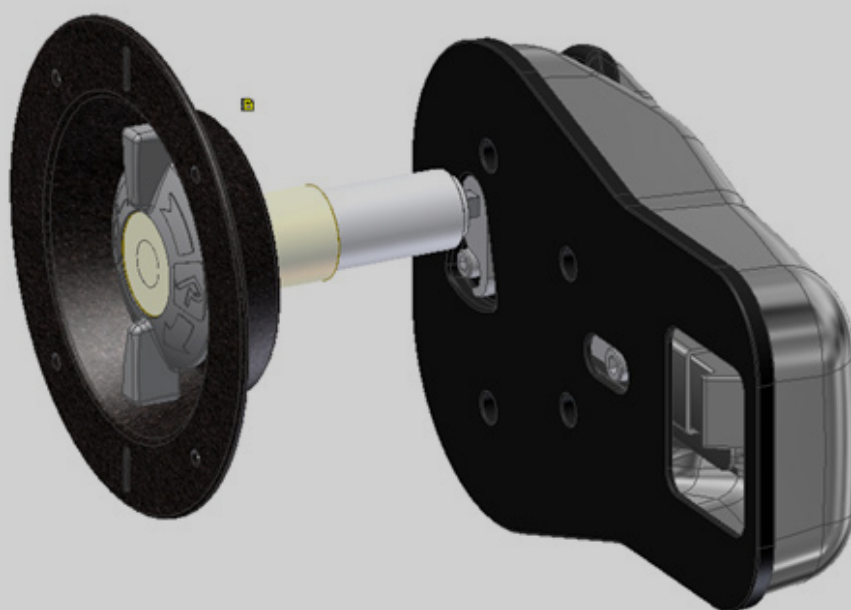


INTERIOR OPENING MECHANISM FOR BOREAS EXTERNAL LOCK

ASSEMBLY INSTRUCTIONS

V01 03.11.2020



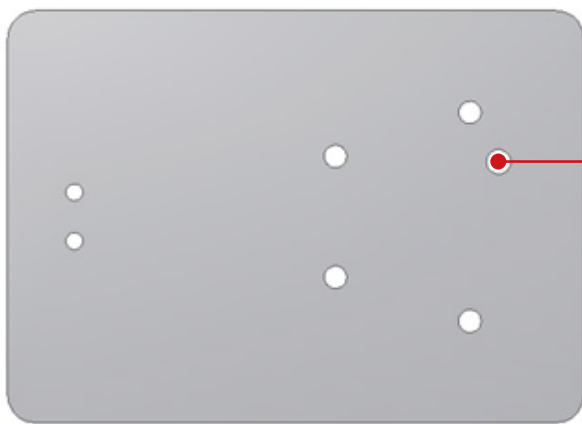
INTERNAL OPENING MECHANISM FOR BOREAS EXTERNAL LOCK

REF. 202930603

To install the internal opening mechanism, please follow the next steps:

1. PANEL DRILLING

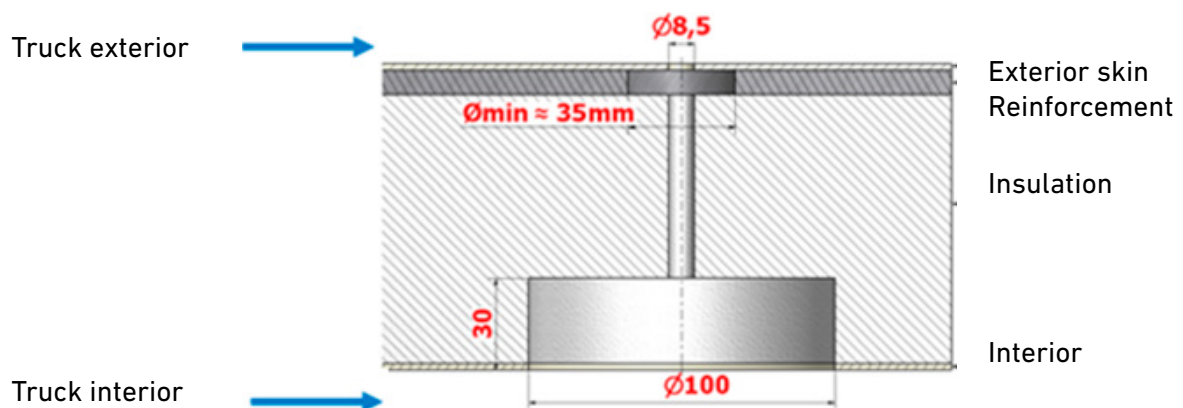
Position the holes template Ref. 370020001 and draw the internal mechanism hole.
Next, drill an $\varnothing 8.5$ mm hole through the panel.



Use this hole for the internal opening mechanism

2. REMOVAL OF PANEL SECTION

Remove a circular section of $\varnothing 100$ mm and 30 mm depth from the interior side of the panel. This will be necessary to position the tray for the internal opening mechanism.

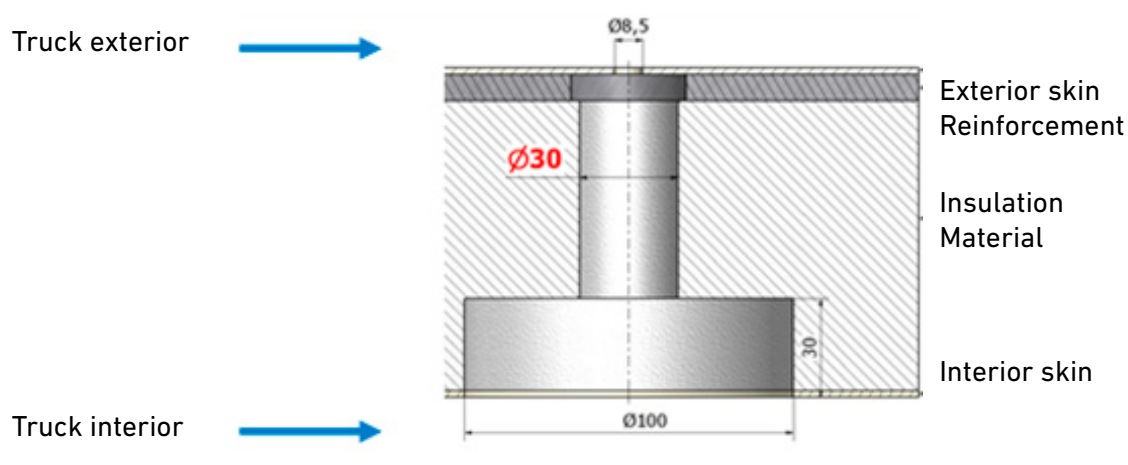


INTERNAL OPENING MECHANISM FOR BOREAS EXTERNAL LOCK

REF. 202930603

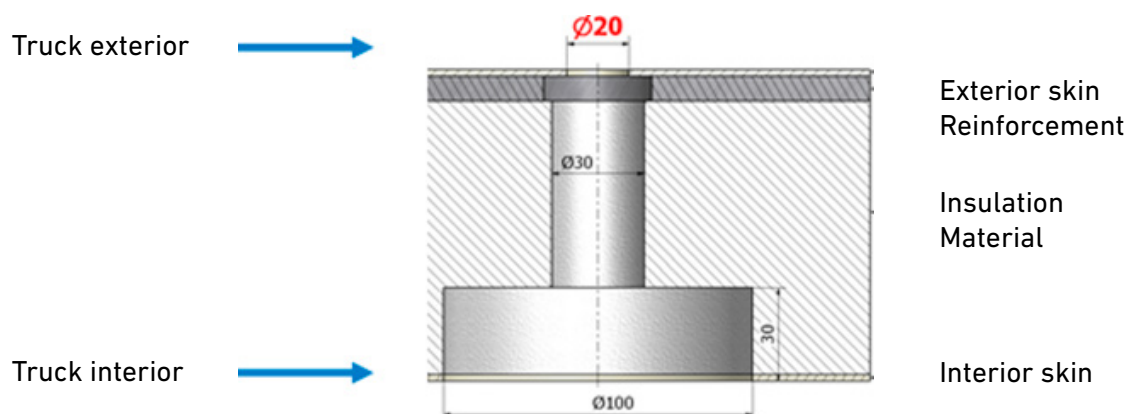
3. Ø30 MM DRILLED HOLE

Drill a Ø30mm hole from the interior side of the panel. Be careful not to breach the exterior skin of the panel.



4. Ø20 MM DRILLED HOLE

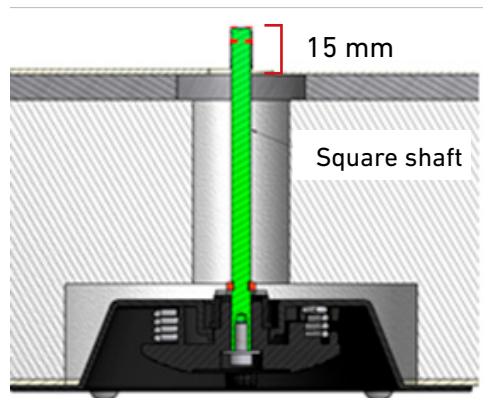
Drill a Ø20mm hole through the exterior skin only.



INTERNAL OPENING MECHANISM FOR BOREAS EXTERNAL LOCK

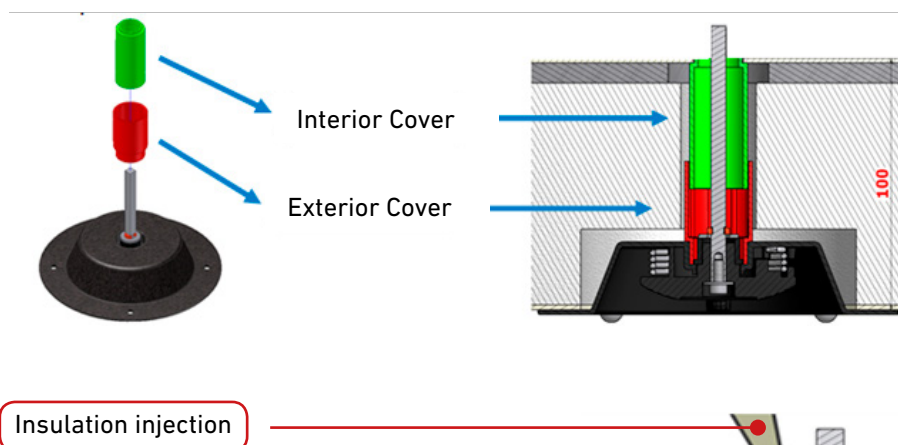
5. CUTTING OF THE SQUARE SHAFT

Position the square shaft and internal opening tray on the interior side of the panel. Make sure the shaft sticks out about 15mm on the exterior side and mark this position. Remove the assembly and cut the shaft.



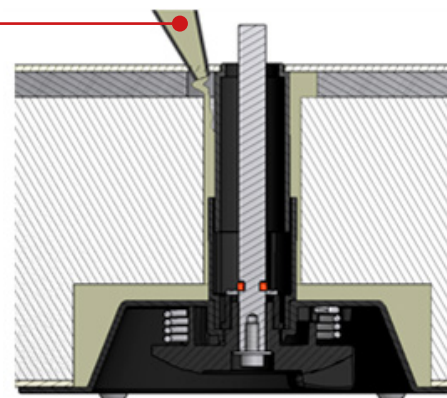
6. INTERNAL OPENING ASSEMBLY

Assemble the exterior and interior shaft covers and attach them to the internal opening tray. Position the mechanism (tray + shaft + covers) on the interior side of the panel until the interior cover touches the exterior skin of the panel. Now the tray can be fixed using Ø5 mm screws or rivets.



NOTE: The design of the covers allows for adjustment of the mechanism according to the thickness of the panel (maximum panel thickness is 100mm):

The covers also provide protection to the mechanism once assembled and mounted in the panel by allowing the insulation material to properly flow around it; This in turn reduces the thermal bridge between the interior and exterior sides of the panel while allowing for proper functioning of the mechanism.

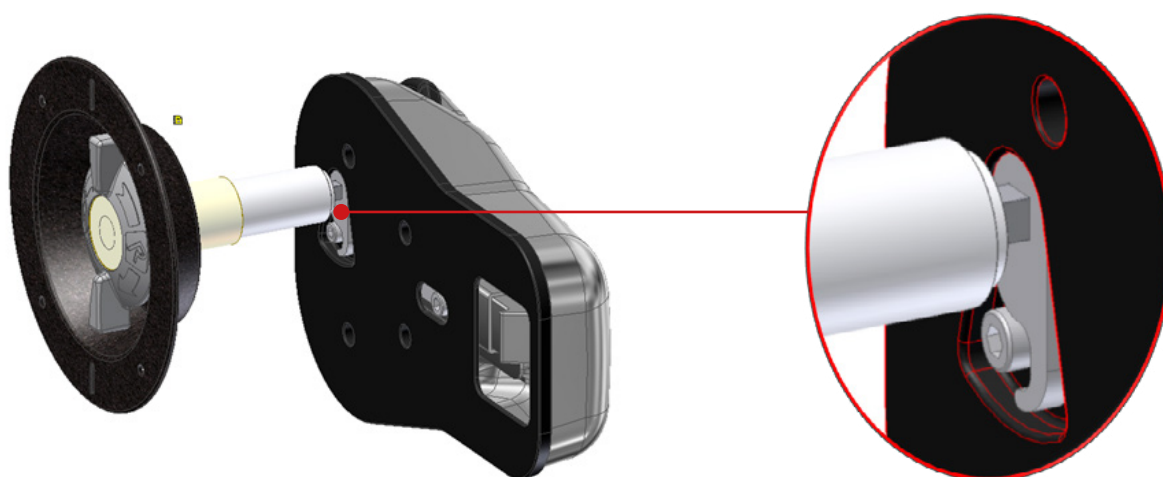
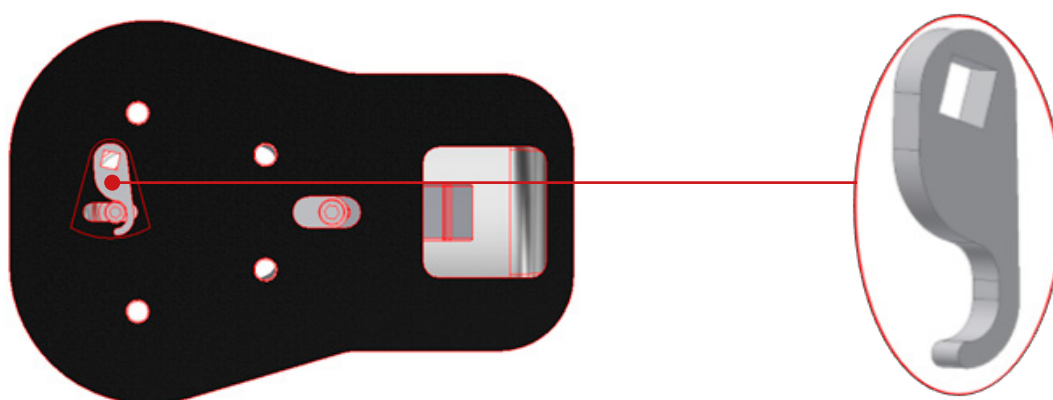


INTERNAL OPENING MECHANISM FOR BOREAS EXTERNAL LOCK

REF. 202930603

7. CAM PLACEMENT

Once the internal opening mechanism is positioned, the next step is to screw the Boreas lock to the exterior side of the panel. Before placing the lock, we need to place the cam in its place making sure the square shaft goes through the cam and the plastic base of the lock. Once this is done, the lock can be fixed to the panel using the corresponding screws.



RECOMMENDATIONS FOR USE

The design of the internal opening mechanism was developed to allow unlocking from the interior side of the truck in case of accidental closure from the exterior side; under no circumstances, it should be used on a regular basis as the primary mechanism to open and close the doors since this will promote early wear and tear of the components and a possible malfunction.